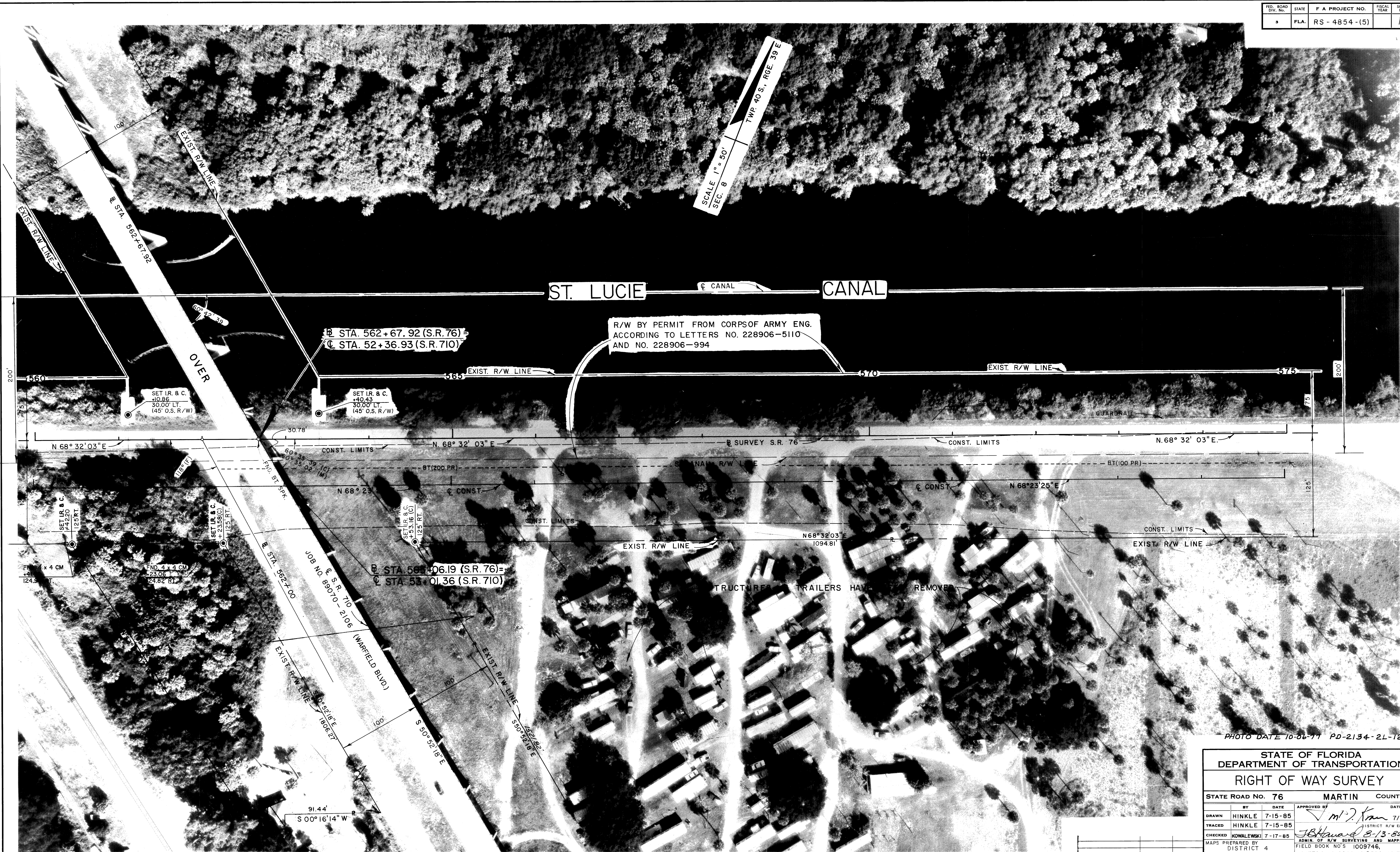


FED. ROAD DIV. No.	STATE	F A PROJECT NO.	FISCAL YEAR	SHEET No.
3	FLA.	RS - 4854 - (5)		10



200'

200'

44' x 4 CM
124.5'

44' x 4 CM
124.82'

91.44'
S 00° 16' 14" W

R/W BY PERMIT FROM CORPS OF ARMY ENG.
ACCORDING TO LETTERS NO. 228906-5110
AND NO. 228906-994

PHOTO DATE 10-06-77 PD-2134-2L-12

NOTE: ALL DISTANCES AND ANGLES FOLLOWED BY (M) ARE BASED ON FIELD MEASUREMENTS MADE DURING THE R/W MONUMENTATION SURVEY.

(SEE SHEET 1 FOR NOTES, SURVEYOR'S NOTES, & SURVEYOR'S CERTIFICATE)

● DENOTES R/W MARKER (SET I.R. & C.)

STATE OF FLORIDA DEPARTMENT OF TRANSPORTATION			
RIGHT OF WAY SURVEY			
STATE ROAD No. 76		MARTIN COUNTY	
BY	DATE	APPROVED BY	DATE
DRAWN HINKLE	7-15-85	<i>M. J. Kan</i>	7/17/85
TRACED HINKLE	7-15-85		
CHECKED KOWALEWSKI	7-17-85	<i>J. Howard</i>	8-13-85
MAPS PREPARED BY DISTRICT 4		ADMIN. OF R/W SURVEYING AND MAPPING	
W.P.I. NO. 4116124		FIELD BOOK NO'S 1009746, 1017764, 1010298, 1018530, 1017763	
SECTION 89060-2508		SHEET 10 OF 17	

ADD MONUMENTATION	E.A.L.	8-1-95
REVISION	BY	DATE